



Since 1971

HENG

GROUND CARE & LIGHTNING PROTECTION

- LIGHTNING PROTECTION ON STRUCTURES
- CONDUCTORS
- GROUND CARE
- EXOTHERMIC FUSION JOINT TECHNOLOGY

AIR TERMINALS & FIXINGS (COMPLY TO IEC 62561 STANDARD)

Copper Taper Air Rod



Copper taper air rods supplied in a wide range of lengths.

Rod Length (mm)	Thread Diameter (mm)	Cat. No.
300	16	CT30C
500	16	CT50C
1000	16	CT10C
Other length available upon request.		

Aluminium Taper Air Rod



Aluminium taper air rods supplied in a wide range of lengths.

Rod Length (mm)	Thread Diameter (mm)	Cat. No.
300	16	AR30A
500	16	AR50A
1000	16	AR10A
Other length available upon request		

Brass Flat Base



Manufactured in Copper Alloy for taper air rod.

Thread Diameter (mm)	Maximum Conductor Width (mm)	Cat. No.
16	25	HV16B

Aluminium Flat Base

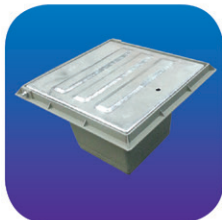


Manufactured in Aluminium for taper air rod.

Thread Diameter (mm)	Maximum Conductor Width (mm)	Cat. No.
16	25	AF16A

EARTH INSPECTION CHAMBERS (COMPLY TO IEC 62561 STANDARD)

Hot Dip Galvanized Type-Earth Electrode Inspection Housing



Used as a housing to protect the earth rod and connections during testing and inspection. Includes a cover with hinge attached to the housing.

Dimension (mm)			Cat No.
Length (mm)	Width (mm)	Height (mm)	
300	300	190	HD143

Heavy Duty Earth Electrode Inspection Housing



Manufactured from high impact polymer that provides excellent chemical resistance and UV protection against degradation. Its light weight gives ease during installation.

Dimension (mm)			Cat No.
Length (mm)	Width (mm)	Height (mm)	
260	260	210	PI244

Concrete Inspection Chamber (SQ)



Used as a housing to protect the earth rod and connections during testing and inspection.

Dimension (mm)			Cat No.
Length (mm)	Width (mm)	Height (mm)	
345	345	210	SAGEC1

Round Concrete Inspection Chamber



Used as a housing to protect the earth rod and connections during testing and inspection.

Dimension (mm)		Cat No.
Dia (mm)	Height (mm)	
360	250	SAGEC5
330	205	CI231R

Earth Electrode Seal



Used as an earth electrode seal to protect against the upward seepage of water via capillary action through the earth electrodes driven into the ground. Its unique and compact design includes the compression rings, seals and factory pre-installed earth electrode and coupling.

Types	Description	Cat No.
(A) 2-Rod Seal	Used in most normal application	DE782
(B) 4-Rod Seal	Used in deep ground concrete slab layers	DE784

Other dimensions available upon request

Concrete Inspection Chamber c/w Cast Iron Epoxy Coated Cover (SQ)



Used as a housing to protect the earth rod and connections during testing and inspection.

Dimension (mm)			Cat No.
Length (mm)	Width (mm)	Height (mm)	
305	305	190	CI030

CONDUCTORS (COMPLY TO IEC 62561 STANDARD)

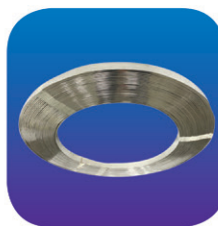
PVC Covered Flat Tape



Manufactured in soft annealed tape with high conductivity standard.

Materials	Conductor Width (mm)	Conductor Thickness (mm)	Cat. No.
Copper	25	3	TP253W
Aluminium	25	3	TAP253W

Tinned Copper Flat Tape



Manufactured in soft annealed Copper with high conductivity standard. It provides protection from corrosive environment.

Conductor Width (mm)	Conductor Thickness (mm)	Cat. No.
25	3	CT253c
50	6	WF506c
63	10	WF6310

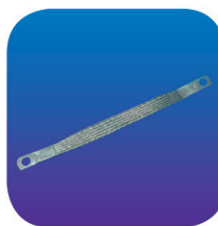
Bare Copper Tape Conductor



Manufactured in soft annealed Copper with high conductivity standard.

Conductor Width (mm)	Conductor Thickness (mm)	Cat. No.
25	3	CT253C
50	6	WF506C
63	10	WF6310

Flexible Braided Tinned Copper Bond



Manufactured from flexible tinned copper braid for bonding fences, doors, gates and suitable for earth bonding where flexibility is required.

Conductor size (mm)	Hole to hole distance (mm)	Hole size (mm)	Materials Tinned Copper Cat. No.
25 x 3	300	M10	FB214
Other dimensions available upon request.			

Aluminium Flat Tape



Manufactured in soft annealed Aluminium with high conductivity standard.

Conductor Width (mm)	Conductor Thickness (mm)	Cat. No.
25	3	AT253A

EARTH RODS & FITTINGS (COMPLY TO IEC 62561 STANDARD)

Copper Bonded Steel Earth Rod 5/8"



Manufactured in Copper Bonded to give high tensile strength for effective grounding system. Used widely on normal application.

Dimensions (mm)	Threaded Diameter (mm)	Shank Diameter (mm)	Cat. No.
16x1800	16	14.2	SNS580

Copper Bonded Steel Earth Rod 3/4"



Manufactured in Copper Bonded to give high tensile strength for effective grounding system. Used widely on normal application.

Dimensions (mm)	Threaded Diameter (mm)	Shank Diameter (mm)	Cat. No.
20x1800	20	17.2	SNS340

Brass 5/8" Coupling



Manufactured in Copper Alloy. It gives good contact and strength between rod-to-rod during driving process into the ground.

Dimensions (mm)	Threaded Diameter (mm)	Cat. No.
19.5	16	ES82B

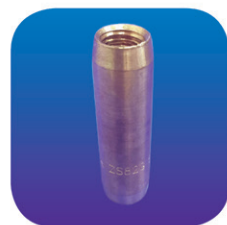
Coupling for 3/4" Threaded Rods



Manufactured in Copper Alloy. It gives good contact and strength between rod-to-rod during driving process into the ground.

Dimensions (mm)	Threaded Diameter (mm)	Cat. No.
25	20	NB82B

Coupling for 5/8" Threaded Rods



Manufactured in Copper Alloy. It gives good contact and strength between rod-to-rod during driving process into the ground.

Dimensions (mm)	Threaded Diameter (mm)	Cat. No.
20	16	ZS82G

CONDUCTOR FIXINGS & CLAMPS (COMPLY TO IEC 62561 STANDARD)

Brass 1" Flat Tape Saddle



Manufactured in Copper Alloy.

Conductor Size (mm)	Cat. No.
25 X 3	ES25B

Metallic DC Tape Saddle



Manufactured in Copper Alloy.

Conductor Size (mm)	Cat. No.
25 X 3	NB25B

Alum Alloy Flat Tape Saddle



Manufactured in Aluminium.

Conductor Size (mm)	Cat. No.
25 X 3	NT25A

Aluminium Metallic DC Tape Saddle



Manufactured in Aluminium.

Conductor Size (mm)	Cat. No.
25 X 3	NB58A

Brass Square Tape Clamp



Manufacture in Copper Alloy. Applicable for various "T" and cross joint connection in a continuous network of conductor.

Conductor Size (mm)	Cat. No.
25x3	ES08B

Square Copper Tape Clamp



Manufactured in Copper Alloy. Applicable for various "T" and cross joint connection in a continuous network of conductor.

Conductor Size (mm)	Cat. No.
25 X 3	ST52G

Aluminium Square Tape Clamp



Manufacture in Aluminium. Applicable for various "T" and cross joint connection in a continuous network of conductor.

Conductor Size (mm)	Cat. No.
25 X 3	STC50A

Aluminium SQ Tape Clamp



Manufactured in Aluminium. Applicable for various "T" and cross joint connection in a continuous network of conductor.

Conductor Size (mm)	Cat. No.
25 X 3	ST50A

Non-Metallic DC Clip Grey used for Bare Tapes



Manufactured in Polypropylene.

Conductor Size (mm)	Cat. No.
25 X 3	NM253G

Non-Metallic DC Clip White used for PVC Covered Tapes

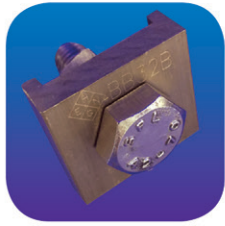


Manufactured in Polypropylene.

Conductor Size (mm)	Cat. No.
25 X 3	NP253W

LIGHTNING & EARTHING COMPONENTS (COMPLY TO IEC 62561 STANDARD)

Copper Tape B Bond Clamp



Manufactured in Copper Alloy. Applicable for bonding flat tape conductor onto metallic surface. M10 Bolt

Conductor Size (mm)	Cat. No.
25 X 3	BB32B

Aluminium Tape B Bond Clamp



Manufactured in Aluminium. Applicable for bonding flat tape conductor onto metallic surface. M10 Bolt

Conductor Size (mm)	Cat. No.
25 X 3	BB32A

Flush Ground Point

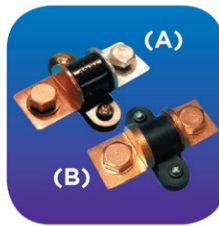


Manufactured in Copper Alloy. It provides a point for earthing between the exposed conductor and the reinforcing bars; casted into the concrete structures to form a complete lightning and earthing system. Hole thread size is M10.

Type	Dimension (mm)	Cat.No.
4-Hole	64 x 64	GC64B

Optional:
4-Hole Plate

Connector Bi-Metallic



Used for connecting Aluminium/ Copper conductor to Copper conductor.

Item Description	Cat. No.
(A) Connector Bi-Metallic	BMC253
(B) Connector Bi-Metallic (Copper to Copper)	BM 544C

Tinned Copper Earth Bar



Manufactured from high conductivity Tinned Copper

Earth Bar Size		Cat. No.
Width (mm)	Thickness (mm)	
25	6	25x6
50	6	50x6
75	10	75x10
100	10	100x10
Other dimensions available upon request.		

Optional:
Earth Bar Bracket

Strike Pad



Fitted on top or side of buildings as a lightning strike point where it is impractical to lay conductors on its surface.

Threaded Diameter (mm)	Material	Cat.No.
(A) 16	Copper Alloy	SP100B
(B) 12	Stainless Steel	SP100S

HENG - MARCONITE



Consist of a granulated conductive medium which is chemically inert and used widely to achieve a lower earth electrode resistance. It provides a good corrosion resistance to the earth electrodes from the poor surrounding soil. Its provides a convenient and effective earthing solutions.

Item	Bag Weight (kg)	Cat. No.
Marconite	25	EC052V

Oblong Test Clamp



Manufactured in Copper Alloy. Applicable for straight joint connection in a continuous network of conduction.

Conductor Size (mm)	Cat. No.
25x3	OG11CB

EARTHING CLAMPS (COMPLY TO IEC 62561 STANDARD)

Rod to Tape Clamp



Manufactured in Copper Alloy. Used with a combination of earth rod and flat tape conductor.

Threaded Earth Rod Diameter (mm)	Flat Tape Conductor Size (mm)	Cat No.
16	25 X 3	NB26B

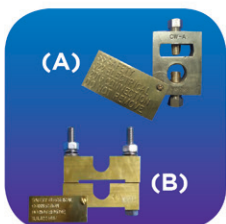
Rod to Cable Clamp



Manufactured in Copper Alloy. Used as a connection for earth rod and round conductor.

Threaded Earth Rod Diameter (mm)	Conductor Size (mm ²)	Cat No.
16-20	50-95	ER195

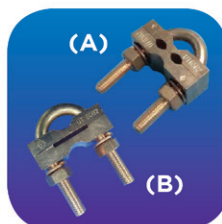
Rod to Tape Earthing Clamp



Manufactured in Copper Alloy. Used with a combination of earth rod and flat tape conductor.

Threaded Earth Rod Diameter (mm)	Flat Tape Conductor Size (mm)	Cat No.
(A) 16-20	25 X 3	NB268
(B) 20	50 X 6	N5062

U-Clamp Connector



Manufactured in Copper Alloy. Used for round conductor diameter to 25mm.

Round Conductor Diameter (mm)	Conductor Diameter (mm)	Cat. No.
(A) Max 25	Max 13	UT65B2
(B) Max 25	25 X 3	UT80B2

Copper Tape Round Test Clamp



Manufactured in Copper Alloy. Applicable as a link joint between the lightning down conductor and earthing system.

Flat Tape Conductor Size (mm)	Cat. No.
25 X 3	RC70G

U-Bolt Clamp



Manufactured in Copper Alloy. Used for round conductor diameter to 32mm.

Round Conductor Diameter (mm)	Conductor Diameter/Tape (Width x Thk) (mm)	Cat No.
Max 32	Max 18 & 25 X 3	UB60D

MISCELLANEOUS ITEMS

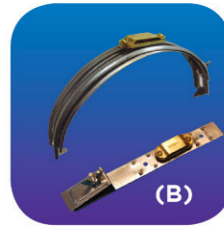
Cliplok Roof Metallic Clip



Manufactured in Copper Alloy Nickel Plated for securing conductors onto a curved or corrugated roof surface. Other clips for different roof surfaces are available upon request.

Materials	Cat. No.
(A) Brass Nickel Plated	CR64B
(B) Brass Nickel Plated c/w SS Screws	CR64BS

Ridge / Slated Conductor Support



Manufactured in Stainless Steel for securing conductor saddle to a ridge and slated roof surface for mounting the conductor.

Item Description	Cat. No.
(A) Ridge Conductor Support	DT001
(b) Slated Conductor Support	DT002

Slated Roof Conductor Support



Copper Alloy or Aluminium saddle riveted to a stainless steel tail; applied on slated or tiled roofing surface for mounting the conductor.

Conductor Sizes (mm)	Conductor Materials	
	Copper	Aluminium
	Cat. No.	Cat. No.
25 X 3	SR33B	SR39A

Concast Adhesive



Use for adhering conductors fixings onto the roof surface where hole drilling is not allowable. The applied bond exhibits excellent adhesion strength and UV resistance under outdoor conditions.

Item Description	Volume (ml)	Cat. No.
Concast Adhesive	310	SSG40

Test Link Box



Used for housing test or junction clamp for lightning down conductor and earthing system. Dimension: 125mm(L) x 125mm(W) x 40mm(H)

Item Description	Materials		
	Aluminium (NM)	Stainless Steel (GI)	Stainless Steel
Test Link Box	TL105	TL106	TL303
Other dimensions available upon request.			
40mm (H) refers to Test Link Box Body without frame & cover.			

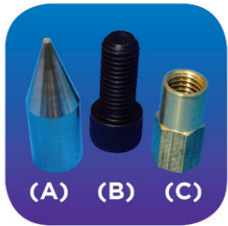
Lightning Warning Sign



Manufactured in either Arcylic or Aluminium.

Materials	Cat. No.
(A) Acrylic	SIGN01
(B) Aluminium	SIGN02

Earth Rod Fittings



These items act as an aid for the rod driving process where the ground exhibits extreme conditions.

Threaded Diameter (mm)	Types of fitting		
	(A) Stainless Steel Spike	(B) Steel Driving Head	(C) Brass Rod Cap
	Cat. No.	Cat. No.	Cat. No.
16	GG16SS	MS16	BC16
20	GG20SS	MS20	BC20
Other dimensions available upon request.			

Static Earth Receptacle



Manufactured in Copper Alloy. Designed to flush with the ground level for point static discharge for aircrafts, tankers, ships & etc.

Size	Type	Cat. No.
Dimension (mm) 98.4 (W) x 158.8(L)	Tip Dia. (mm) 12.7	SER 993
Other dimensions available upon request.		

Prefabricated Exothermic Tee and Straight Joint

Pre-fabricated Tee and Straight Joint exothermic connection of different conductors.

	Conductor 1	Conductor 2	Cat. No.
	500mm(L) H10/H13/H16 Rebar	25mm(W) x 3mm x 500mm(L) Copper Tape	PRE001/ PRE002/ PRE003
	500mm(L) H10 Rebar	70mmsq copper cable x 1000mm(L)	EXRBTC
	500mm(L) H16 Rebar	Stainless Steel threaded rod 5/8" x 200mm(L)	PRE040
	70mmsq Copper Cable X 1000mm(L)	4 Hole Flush Ground Point	GPTC
	Mild Steel Plate 75mm X 75mm x 3mm(T)	25mm(W) x 3mm(T) x 1000mm(L) Copper Tape	PRE007
Other dimensions available upon request.			

Oxide Inhibitor Compound



Consists of non-water soluble grease; made from natural petroleum based polymer that provides excellent barrier on electrical connection against moisture and oxidation.

Item Description	Volume Oz	Cat. No.
Oxide Inhibitor Compound	8	PENE8

Pipe Bonding Clip



Manufactured in Stainless Steel. Used for bonding round conductor to pipes and handrails.

Length of strip (mm)	Max Pipe Diameter (mm)	Cat. No.
250	80	BC250
450	140	BC460
650	200	BC660
Other dimensions available upon request.		

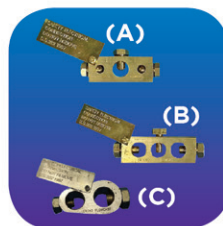
C Clamp



Manufactured in Copper. Widely used as a mechanical joint on round conductors in grounding where it is inappropriate for exothermic welding.

Conductor Size (mm ²)		Cat. No.
Run	Tap	
35	(35-10)	CCC35-35
70	(35-4)	CCC70-35
70	(70-35)	CCC70-70
95	(35-4)	CCC95-35
95	(95-50)	CCC95-95
120	(120-25)	CCC120-120
185	(185-120)	CCC185-185
240	(240-120)	CCC240-240
Other dimensions available upon request.		

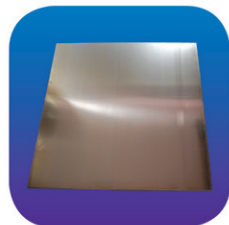
Ground Rod to Cable Clamp



Manufactured in Copper Alloy. Used as a connection for earth rod and round conductor.

Threaded Earth Rod Diameter (mm)	Conductor Sizes (mm ²)	Cat. No.
(A) 16	16-35	ER216
(B) 16-20	120-150	ER1202
(C) 16-20	185-240	ER240
Other dimensions available upon request.		

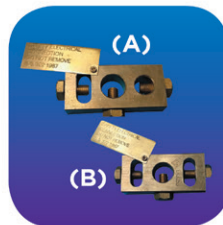
Solid Copper Plates



Made from Copper and used as an alternative earth electrode to improve the earth resistivity.

Dimensions (mm)	Cat. No.
600 x 600 x 3	LB122
1000 x 1000 x 3	LB124
1200 x 1200 x 3	LB123
Other dimensions available upon request.	

Ground Rod to Tape to Cable Clamp



Manufactured in Copper Alloy. Used as a connection for earth rod and Flat &/or round conductors.

Threaded Earth Rod Diameter (mm)	Conductor Sizes	Cat. No.
(A) 16-20	Tape 25x3mm & Cable 95/120/150mm ²	ER370
(B) 16-20	Tape 25x3mm & Tape 25x3mm	ER3253

All information shown in our HENG catalogue has been checked for accuracy at the time of printing. However, HENG does not provide any warranty of any kind, express or implied and we shall not be liable for any loss or damage that may result from any use of the information which the catalogue contains. HENG reserve the right to change and improve product design, descriptions, or any information in the catalogue at any time without prior notice.

Copyright

Unauthorized reproduction, copied or transmitted of information in HENG catalogue without our prior written permission, will be considered as infringement of Copyright and will result in legal action.

Printed in July 2023



HENG HARDWARE ENGINEERING PTE LTD

7 Yishun Industrial Street 1, #01-48, Northspring Bizhub Singapore 768162

Tel: (65) 68464-111 Fax: (65) 68464-222

Email: sales@heng.com.sg

Website: www.heng.com.sg